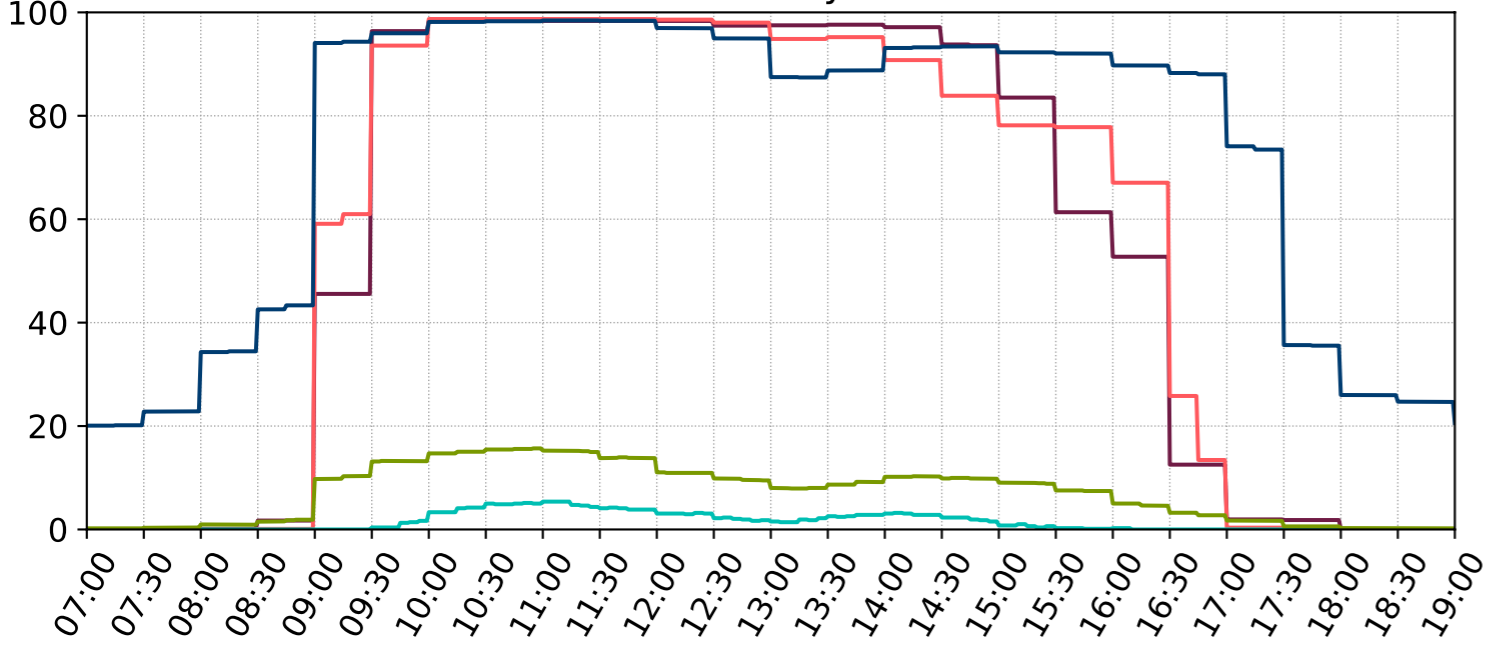
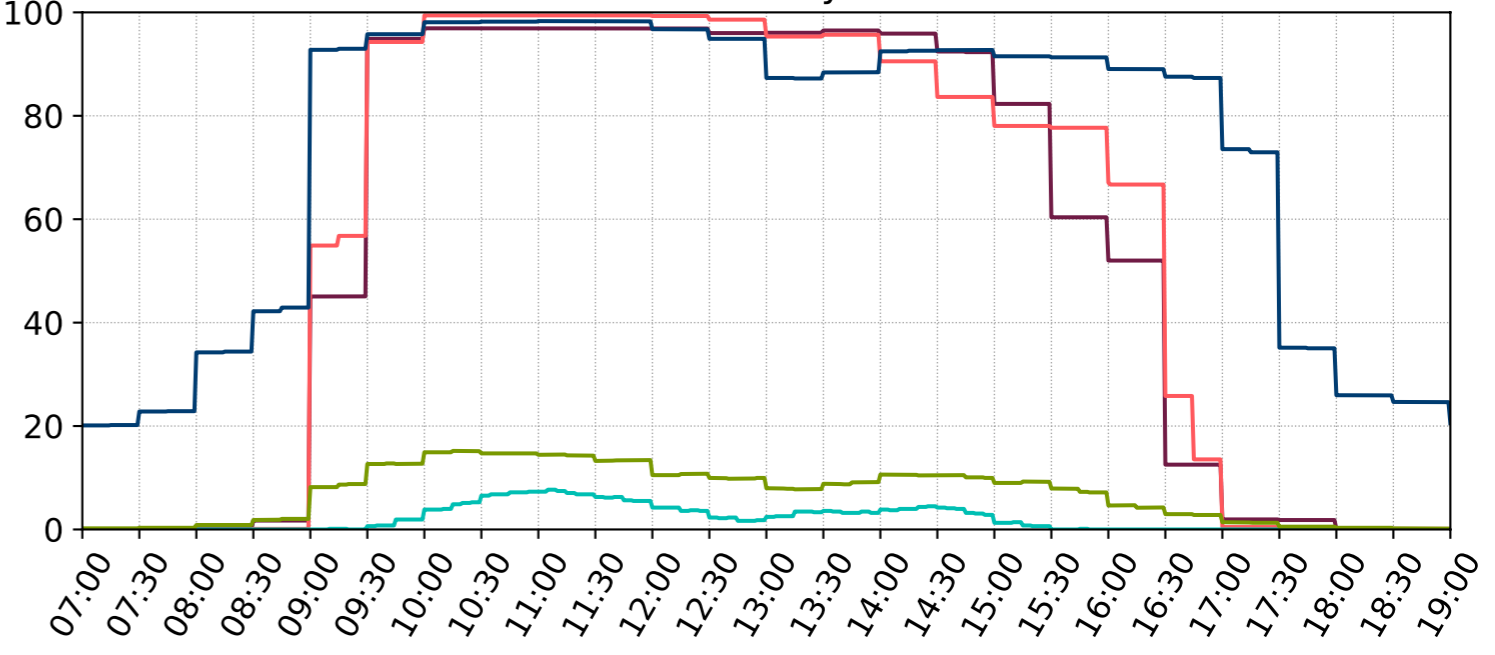


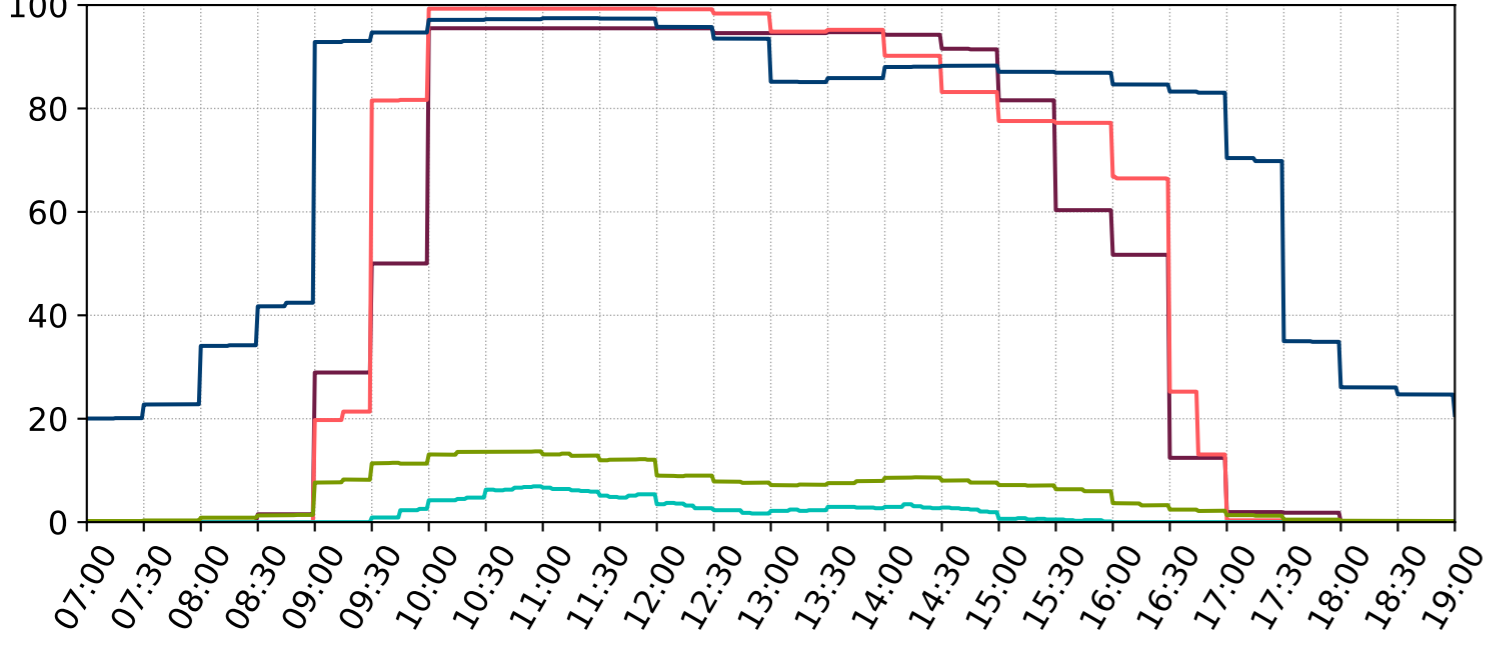
Monday



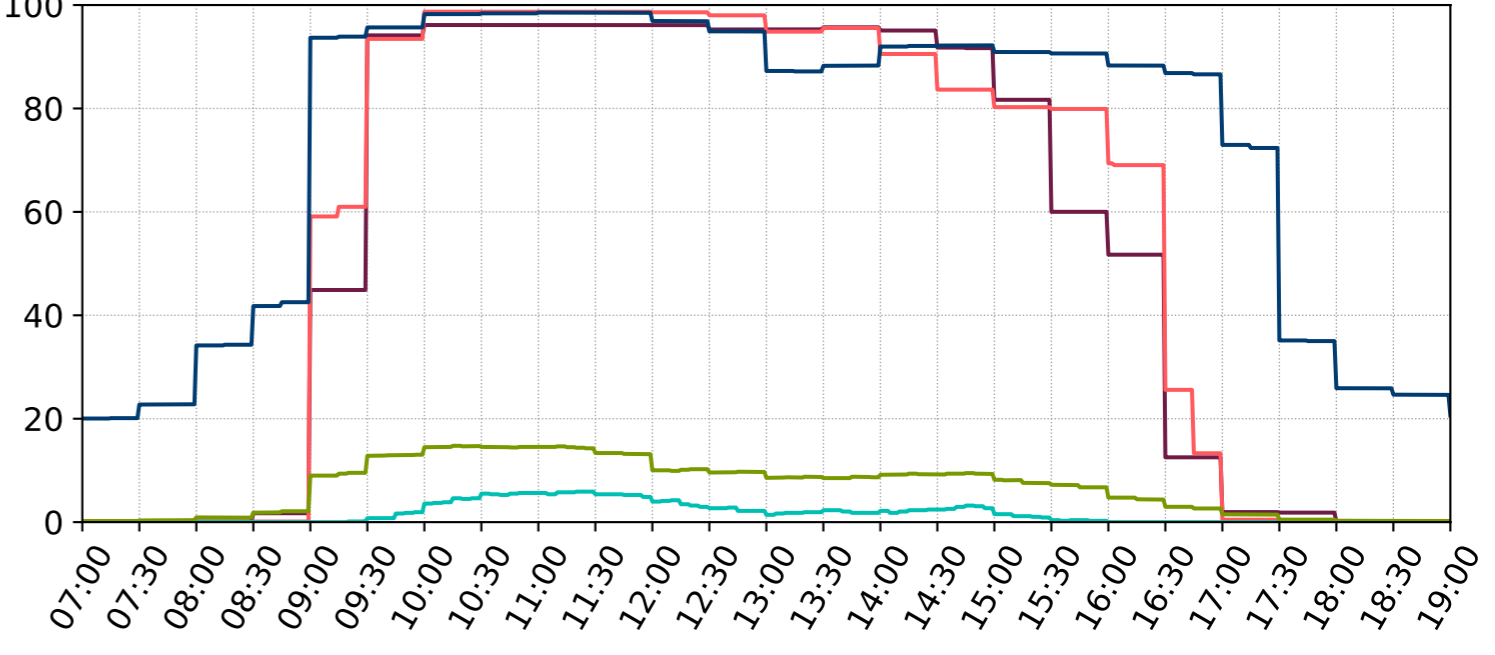
Tuesday



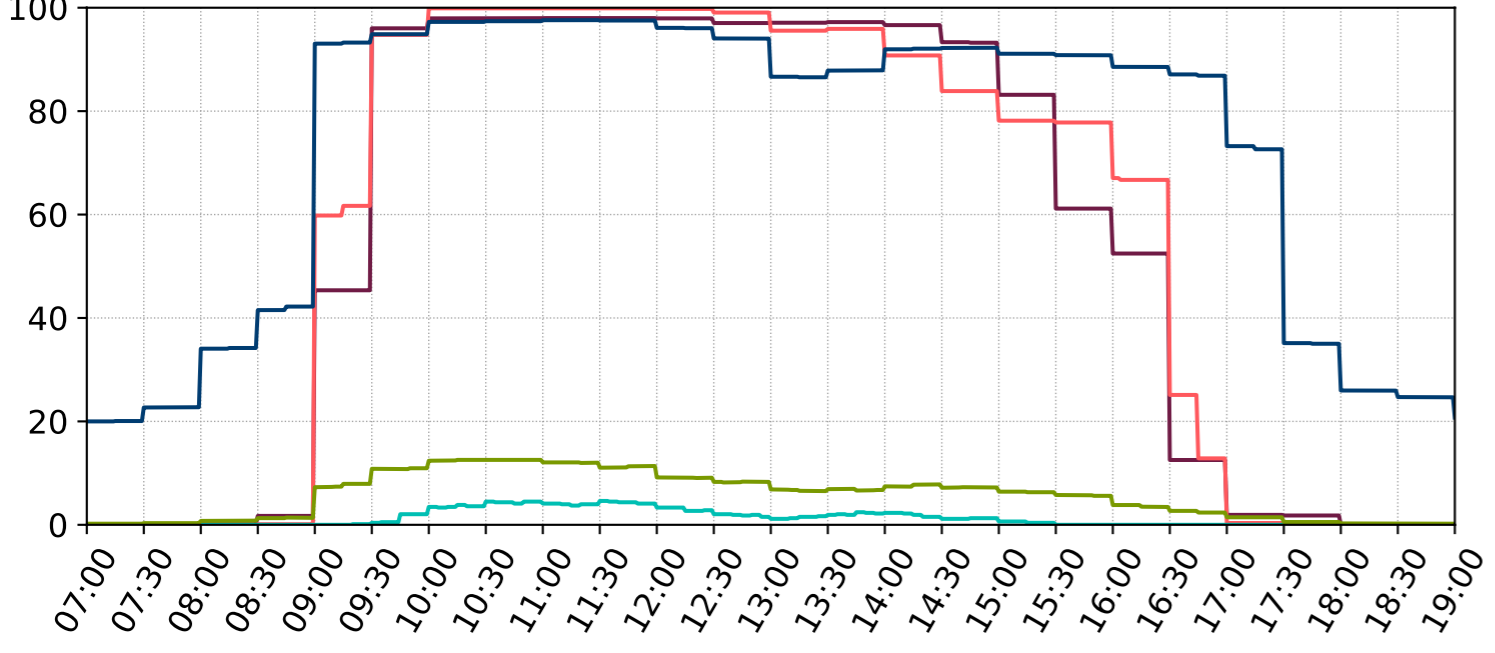
Wednesday



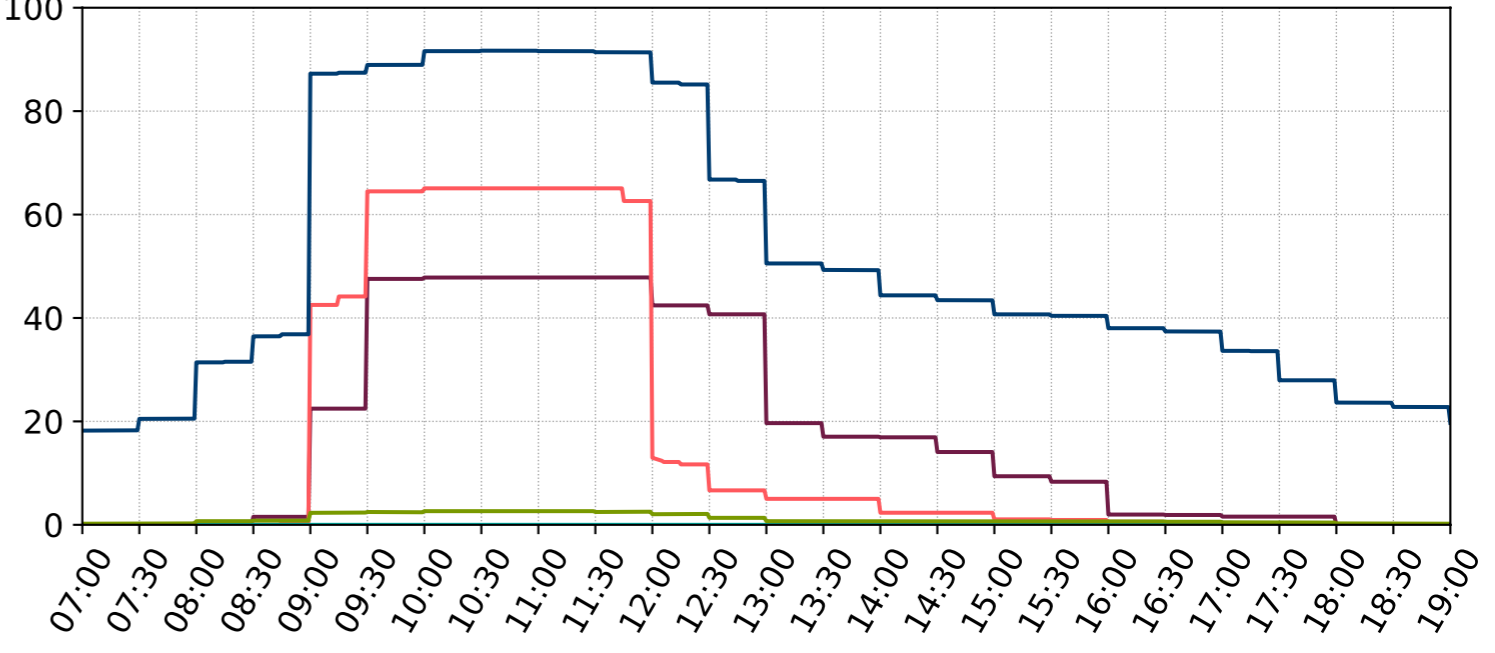
Thursday



Friday



Saturday



— Larger PCA providers (brick-and-mortar branches)    
 — Other banks and building societies (brick-and-mortar branches)    
 — Post Office branches (excl. mobile/outreach)    
 — Mobile bank branches    
 — Mobile/outreach Post Office branches